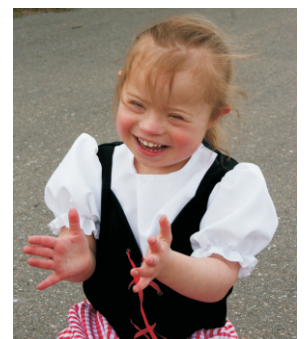


Children's  
Ability Fund

[www.childrensabilityfund.ca](http://www.childrensabilityfund.ca)



# Annual Report 2011-2012

## Message from the Chair

Another year and my heart remains full when I see the smiles and peace of the many more children and their families you have touched with your generous gifts of love. Oh, yes, love...and please don't be so modest! Your gifts have come to us at the **Children's Ability Fund** in the form of time, service, money, and most importantly, hope. Your generosity has provided equipment that has made freedom a cherished resource!

The fun we had bowling with JOE FM at the Bowl for Children, the Tee Fore Two Golf Tournament, Vegreville Demolition Derby, Monday Morning Magic & Rodeo Magic. Oh, the smiles! All of that and more has given us the opportunity to provide more than \$100,000 to twelve children and their families to assist with the purchase of with modified vehicles that have allowed them to participate more fully with family and friends in their communities! How awesome is that!

Can you imagine what it must feel like to be kept from participating with your family and friends? Perhaps a few of you know firsthand. I know what it felt like to be kept apart from the fun activities. I've shed a few tears but for several years now I only shed happy tears when I am able to experience the opportunity and blessing to have access to accessible transportation. This one simple but significant thing has given me the gift of hope...the freedom to choose to go forth and become all that I can be.

Feel the warmth of all of our clients' love as I thank you on their behalf. Thank you to the donors for your generosity. Thank you to the volunteers for your time. Thank you to the staff and Board of Directors for your service. And thank you everyone for the friendship and love you share with one another!

I look forward to another year of love, joy, and peace!

Respectfully,

Linnie Tse



### 2011/2012 Board of Directors

#### **Chairperson**

Linnie Tse, MEdes

#### **Secretary**

Michelle Roy, BScPT

#### **Treasurer**

Brian Alguire, CMA

#### **Directors**

David Dorward, CMA CA  
Wayne Evanson  
Ken Gulevich  
Sylvia Herman  
Jack Lund  
Robroy (Bob) McGregor

#### **Past Chairperson**

Jim Banks

## Message from the Executive Director

Mo-bil-i-ty (noun) - ability to move about...

Being mobile is something most of us take for granted – especially in this fast paced world we live in. Many of us have the ability to jump in the car to head to work or to pick up a few groceries, we get on our bike for a trip to the park or the playground, or we walk to the community center to participate in a local activity.

Our mission is to provide funding (for equipment) to enhance the independence of people with disabilities. Mobility issues and independence take on a whole new meaning when I get to see firsthand what it mean to people we help.

We provided a specialized stroller for Vienna. *“Without this specialized stroller Vienna and our family would not be able to participate in the community events that we enjoy. Having (it) has greatly improved our family and our daily routines.”* Harvey sent us a picture of his new wheels (power wheelchair) and said *“Thank-you very much for giving me my independence back. It feels great to be able to do things without relying on someone else.”*

*“Sean is a social butterfly,”* says his Mom Beverly. *“He felt so stuck in his manual wheelchair. His new power chair provides him with daily independence. Now we ask ‘where’s Sean?’ because he’s out cruising around and has already become an integral part of his community.”*

Almost 80% of the equipment we provide is geared to the issue of mobility and thanks to the generosity of our donors and corporate partners, last year we were able to provide grants of almost ¼ of a million dollars - for mobility devices. Next time you jump in your car to run an errand, race your kids to the park, or walk to a cafe to meet a friend for coffee - take a moment to really appreciate your ability to do so.

Yours in community service,

Carol Russ



### Staff

#### **Executive Director**

Carol Russ, CMA, Bmgt

#### **Client Care Coordinator**

Marilyn Melnychuk

#### **Office Manager**

Joanne Rediron

#### **Communications/Special Events**

Kimberley Tew





## Client Care

### Our Vision

...equal participation in our society of all persons with disabilities.

### Our Mission

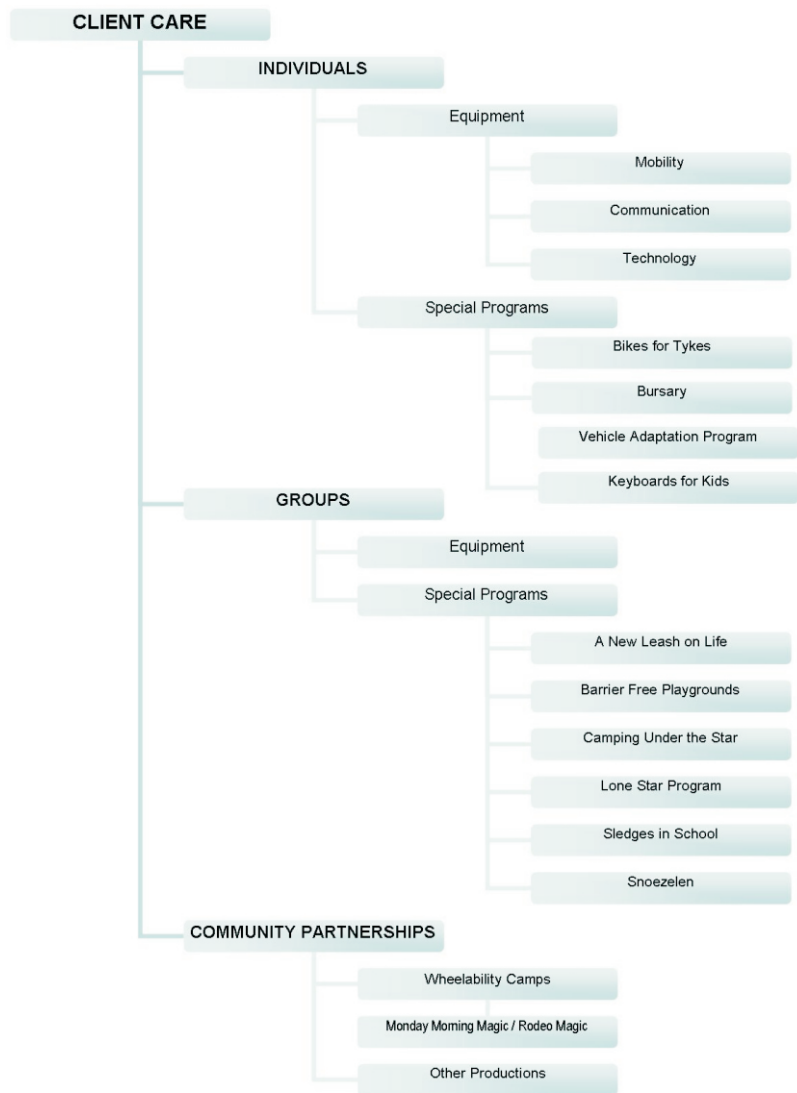
...to provide funding to enhance the independence of persons with disabilities throughout northern Alberta.

Our goal is to create awareness and enhance independence by providing specialized equipment for people with disabilities.

Our focus is on children, however, age and type of disability are not considerations when reviewing applications. We accept applications from individuals and groups residing in Edmonton and northern Alberta. All applications are prioritized based on basic needs, immediacy of the request, and financial need.

Funding is directed toward three basic areas:

- Individuals
- Groups
- Community



More Online at [www.childrensabilityfund.ca](http://www.childrensabilityfund.ca)



### Client Videos

Meet the families and individuals whose lives you have helped to enhance through your donations.



### Stay Connected

Like us on facebook for updates on our monthly client approvals, special events, and what is happening at the **Children's Ability Fund**.



# Individuals - Equipment

Specialized equipment includes such items as:

**Mobility Devices** – Wheelchairs, walkers, overhead lifts, porch lifts, vehicle lifts, ramps, lift chairs, hospital beds, tilt systems, standing frames, car seats, leg braces

**Communication Devices** – TTY's, signaling devices, Voice synthesizers, FM systems

**Other Technology** – Alphasmarts, Braille printers, zoom text, joysticks, keyboards



*This stroller gives hope to function and do normal everyday things without a struggle.*

*~Meredith's family*

INDIVIDUALS - Summary		Edmotnon		Northern Alberta	Total
Mobility Aids / Devices	25	\$87,190	34	\$99,447	\$186,637
Bikes for Tykes Program	6	\$7,643	4	6,615	\$14,258
Vehicle Adaptation Program	34	\$25,000	2	\$20,000	\$45,000
Other	5	\$1,686	0	\$0	\$1,686
Total Individual Requests					\$247,581



*A family like us with two special needs kids – we cannot provide everything and we would probably be in big trouble if we didn't have your around. With the (overhead) tracks it is so easy for us now – my back is pretty happy too! It makes the kids happy and independent as much as we could so it's a really good thing. Without you we could not do it – Its a big relief!*

*~Melodie and Frederic's Mom*



*Thanks again...Your donations have really made a difference in my life and I really appreciate it. Please don't ever stop because people like me need your help.*

*~Alicia*



## Individuals - Special Programs

### Bikes for Tykes

The Bikes for Tykes program was introduced to provide funding for the adaptation of a bicycle for the individual needs of a child with a disability. Bikes provide an independent mode of transportation that helps build self-esteem and gives a sense of freedom. Special adaptations to a bicycle can help a child with disabilities “delight in being a child”.



10 new bikes were purchased through this program totaling \$12,775

*“Every day our family is highlighted by Yan's achievements and his happy smile when he reaches success. We are so happy to observe him opening new opportunities for himself.”*

*~Yan's family*



## Children's Ability Fund Bursary

The Children's Ability Fund Bursary is awarded annually in amounts up to \$5,000 at the discretion of the Board of Directors and may be allocated to more than one individual. The selection committee bases its decision on personal accomplishments and financial need.

**The Children's Ability Fund Bursary was shared by 3 individuals this year.**

- Leah Balding, Edmonton
- Tyler Hanchuryk, Lloydminster
- Nicole Rankin, Fort McMurray



# Individuals - Special Programs

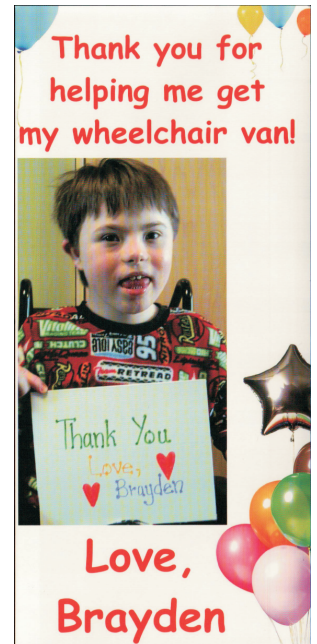
## Vehicle Adaptations Program

Accessible transportation is critical for people with disabilities to have the freedom to travel where, when, and how they choose. The introduction of new technology continues to broaden opportunities for people with disabilities to drive vehicles with adaptive devices.

The Vehicle Adaptation program provides a grant up to \$10,000.

5 families benefited through the Vehicle Adaptation program this year totaling \$45,000.

Meet Brayden...







## Groups - Equipment

### Soldier On! Ice Hockey Sledges

The Children's Ability Fund donated 15 ice hockey sledges and pairs of sticks to the CFB Edmonton Sledge Hockey team initiative, a total monetary value of \$10 500. The sledges mean that a 15 military members, veterans, and DND employees are able to return to the ice, regardless of their physical limitations.

For the injured and ill soldiers this donation opens up the ability to play a team sport again, to be active with their friends and coworkers, and the ability to travel and compete with the team. "Adapted sports are good, not only for injured soldiers with permanent disabilities, but for soldiers that are going through their rehabilitation and will eventually return to full duties."

The CFB Edmonton team officially kicked things off with their opening demonstration game on November 1, 2011 at the CFB Edmonton Arena with an exhibition game against participants from the Children's Ability Fund.



### Snoezelen Room Grant

The Snoezelen Room Program offers a one time only grant in amounts up to \$5,000 to an organization or group installing a multi-sensory environment created for people with disabilities.

Snoezelen provides a full range of sensory stimulation and enjoyable experiences in an atmosphere of trust and relaxation. In a safe, comfortable environment, the primary senses are stimulated by wonderful combinations of music, lighting effects, gentle vibrations, tactile sensations and aromatherapy.



3 Snoezelen Room grants  
for a total of \$12,000



GRACE MARTIN SCHOOL  
8210 - 36 Avenue  
Edmonton, Alberta T6K 0C7  
Tel: (780) 462-7121 Fax: (780) 462-7131

JUN 6 2012

May 29, 2012

Marilyn Melnychuk  
Client Care Coordinator  
Children's Ability Fund  
10024-164 Street  
Edmonton AB T5P 4Y3

Dear Ms. Melnychuk,

We have gratefully received the donation of \$2500 from the Children's Ability Fund to assist with the purchase of a Snoezelen Cart for our students.

Thank you so much! This equipment is already making a huge difference to a number of our students. There is a student in the morning to help him settle in and get ready to learn. There are a few students with emotional and mental health needs who are using the equipment as part of their "tool kit" of self-soothing strategies. As well, we have a student with severe physical and cognitive needs who truly lights up when she has the opportunity to work with the cart. She becomes calm and focused and she loves the opportunity to interact with and control her environment. Everyday our staff members are finding new ways to use the equipment and new students who benefit from the sensory stimulation and interaction it provides.

Again, we are so grateful for the donation of the Children's Ability Fund to allow us to provide these sensory experiences for so many of our students. Thank you.

Sincerely,

Glen Wilcox, B.Ed., M.Ed.  
Principal  
Grace Martin School

Tracy Tucker  
Tracy Tucker B.Ed., M.Ed.  
Curriculum Coordinator  
Grace Martin School



Sakinah Circle

Welcoming Sakinah Circle  
to the Grace Martin Family



EDMONTON PUBLIC SCHOOLS

## Camping Under the Star

The Camping Under the Star program offers a grant up to \$5,000 to not-for-profit recreational facilities and organizations providing recreational opportunities to children with disabilities in northern Alberta.

Camp Tamarack in Grande Prairie and Camp Freedom hosted by Spina Bifida Association were awarded this grant for 2011.



## A New Leash on Life

A New Leash on Life is a program that awards funding to an accredited organization (through Assistance Dogs International Inc. or International Guide Dog Federation) to raise and train an assistance dog for people with disabilities who reside in northern Alberta.

The Lions Foundation Dog Guides and the Dogs with Wings Assistance Dog Society were both awarded the grant.

## Barrier Free Playground Grants

The Barrier Free Playground program offers a grant in the amount of \$5,000 to groups constructing a new playground that meets the new Annex H standards. Annex H spells out the base level requirement for what constitutes an accessible playspace and will ensure that all playspaces are both safe and accessible so everyone in the community can participate.

Funding was approved for playgrounds in Leduc and Beaumont for a total of \$10,000



## Keyboards for Kids In Schools Program

The Children's Ability Fund was awarded a \$18,900 grant by the TELUS Community Foundation for our Keyboards for Kids Program.

We were able to distribute Alphasmart NEOs to 4 school districts in the greater Edmonton area and the response to the program has been extremely enthusiastic!

The donations will help to increase the number of students with disabilities or delays who will have access to this very basic, yet extremely useful, piece of technology. As funding is limited to our schools, and adaptive technology can be a great expense, this program has assisted and will continue to have an impact on the students in our area for years to come.



180 Alphasmart NEOs were distributed to 4 school districts in the greater Edmonton area.



*We would like to thank you so much for the donation of Neo's. The teachers and students are thrilled to have been given such a generous gift! What a great program!*

*Terri Notdorf  
Rutherford School*



# Community

The Children's Ability Fund has been working in communities in northern Alberta since 1947. A significant part of our commitment to our goal is active participation through sponsorship of events which promote awareness and provide opportunities for children with special needs to participate in fun activities.



- Rodeo of Smiles
- Monday Morning Magic
- Vegreville Father's Day Parade and Demolition Derby
- Rodeo Magic (CFR)
- Stony Plain Farmer's Day Parade



# Fundraising - Campaign 2012

*It's all about mobility and independence*

Each and every year the majority of requests we receive are for mobility related equipment – providing the ability to be more independent at home, at school, and in the community.

## Endowment Fund

Each year our Endowment Fund provides funding to assist with the administration and overhead cost of the **Children's Ability Fund** ensuring that all donations received are used to purchase equipment to enhance the lives of people with disabilities. Every year a percentage of all bequests are added to our Endowment Fund for continued growth and continuity.

This year we are grateful to have received funds from the Estates of:

- Estate of Ms. Grace Pauline Neill
- Estate of Gordon Finnemore
- Estate of Charlotte Prowse
- And disbursements from the Ralph Buttner and Hughes Trust Funds

## In Memory of

Several people made a donation in honour of a loved one. At a time when they were remembering someone very dear to them, they also thought of others and extended their hand in support of those in need.

This year we received donations in memory of:

- John & Georgina Chapman
- Marjory Lambert
- Robert & Shirley Matters
- Evelyn Miller
- James Murlands
- Doreen Racho
- Allen & Jean Schreiber
- Benno & Linda Stang
- Shirley Walker
- Darryl Welk
- Terry Wooldridge
- Brad & Shauna Zimmer

Thanks to the decision to honour a life well lived, the **Children's Ability Fund**, inturn will be there to help others live better too.

# Fundraising - Shining Stars

**Children's Ability Fund** Shining Stars help make things a little brighter for someone with a disability. They encourage friends, customers, students, and colleagues to help give the gift of a voice, mobility, and independence!

These are ordinary people who have chosen to do something extraordinary.

These people shone brightly this year:

- **Silent River Kung Fu - \$3000**
- **Synapse! (Neonatrix Services) - \$3000**
- **Walmart Wheelchair Media Challenge - \$10,500**



## Special Events

Special fundraising projects give us a unique opportunity to raise money in a fun and exciting environment. They create opportunities to share our goals and involve media and community members in our organization.

### Tee Fore Two Charity Golf Tournament

Our 9th Annual tournament was sponsored by Carton Land Inc. Raising just over \$35,000 and hosting 104 golfers, we had another great day!



Winning Team Dorward



### Tee Fore Two Golf Tournament

Thank you for joining us on the greens and supporting the Children's Ability Fund

<b>Presenting Partner</b> Carton Land Inc.	<b>Hole Sponsors</b> Dorward & Company LLP Dynateam Realty Ltd. ECO Medical First Avenue Properties The Furnace Company Inside Outside Developments Inc. James Keiller Professional Corp. Ketek Group Kingston Ross Pasnak LLP Northern Alberta Prosthetics & Orthotic Services Ltd. ReidBuilt Homes Sabre Insurance Inc. Shoppers Home Health Care Smartland Capital Inc. UCT Edmonton Council 1016	<b>First Tee Gift</b> Carton Land Inc.  <b>Food and Beverage</b> Local Public Eatery  <b>50/50 Draw</b> Parker Dubrule Lawyers  <b>Hole in One</b> ArrKann Trailer & R.V. Sabre Insurance Inc.
---	---	---

**Media Partners**  
CTV  
630 CHED  
The Edmonton Journal

**Breakfast**  
Second Cup

Your support will help people with disabilities continue to "walk 'n' roll" in our communities



(780) 454-9191 [www.childrensabilityfund.ca](http://www.childrensabilityfund.ca)



### 92.5 JOE FM Bowl for Children

The 14th Annual Bowl for Children raised over \$15,000 through pledges and donations. We had an A-list of celebrities head up our teams and show off their bowling skills for another amazing night of fun, food, and fantastic prizes!

The Children's Ability Fund would like to thank all our supporters and our major sponsors: 92.5 JOE FM, Ed's Rec Room, West Edmonton Mall, Double Diamond Electronics and Ben Moss Jewellers!





# Volunteers

This year 705 volunteer hours were logged. Thank you to the 105 individuals who shared their precious time to help us raise money and awareness.

Our largest volunteer fundraising projects this year in terms of man hours worked were:

- Oilers 50/50 256 hours
- Tee Fore Two Golf 102 hours
- Vegreville 50/50 draws 85 hours
- Oil Kings 50/50 40 hours
- Board Meetings + 75 hours



We can fulfill our mission with the help of our dedicated volunteers.  
**THANK YOU ALL!**

## VOLUNTEER RECOGNITION and APPRECIATION

We like to recognize those individuals who so generously donate their time and energy to help us reach our goals. Over the past year the following individuals reached some milestones in volunteer commitment.

Extraordinary Stars	Platinum Stars	GOLD Stars	SILVER Stars	BRONZE Stars
More hours than we can count	250 + hours	100+ Hours	50+ Hours	25 + hours
Bob McGregor	Jim Banks		Wayne Evanson	Rita Evanson
Sylvia Herman	Pam Russ		Linnie Tse	



Congratulations to our long time volunteer extraordinaire and Board Member, **Bob McGregor**, on being recognized for his outstanding community achievements and contributions (many to the Children's Ability Fund) by being awarded the Diamond Jubilee Medal. This medal was created in celebration of the 60th anniversary of Her Majesty's accession to the throne.



## Children's Ability Fund Statement of Financial Position As of June 30

	2012	2011
<b>ASSETS</b>		
Current Assets	22,478	149,862
Investments	3,653,261	3,811,539
Capital Assets(Net)	968	1,395
	<b>3,676,707</b>	<b>3,962,796</b>

### LIABILITIES

Current Liabilities	65,623	116,136
---------------------	--------	---------

### EQUITY

Beckett Trust	2,178,303	2,290,567
Endowment Fund	1,226,976	1,233,065
Bursary Fund	78,880	78,880
General Fund	125,957	242,753
	<b>3,675,739</b>	<b>3,961,401</b>

## Children's Ability Fund Statement of Operations For the Year Ended June 30

	2012	2011
<b>REVENUE</b>		
Investments	142,234	232,553
Unrealized Gain (Loss) on Investments	-81,490	94,017
Donations & Grants	89,537	71,663
Fundraising Projects	79,836	70,609
Gaming	69,254	70,009
Estates & Legacies	47,355	38,991
	<b>346,726</b>	<b>577,842</b>

### EXPENDITURES

Administration	175,786	182,557
Programs & Public Awareness	44,603	29,448
Fundraising Projects	31,821	26,141
Campaign Costs	13,241	22,690
GST	2,332	2,320
	<b>267,783</b>	<b>263,156</b>

### DONATIONS Client Care

Individual Client Requests	202,831	155,604
Vehicle Modifications	45,000	55,000
Groups & Group Programs	51,686	25,469
Barrier Free Playspace Project	10,000	25,000
Children's Ability Fund Bursary	5,000	5,000
	<b>314,517</b>	<b>266,073</b>
<b>Surplus/Deficit</b>	<b>-235,574</b>	<b>48,613</b>



**Children's  
Ability Fund**  
of the Northern  
Alberta Crippled  
Children's Fund (NACCF)

#### Clifford & Mabel Becket Trust Fund

In 2000, the Children's Ability Fund received endowment proceeds of \$2,281,354 from the Becket Trust. This has been placed in an internally restricted fund for future use.

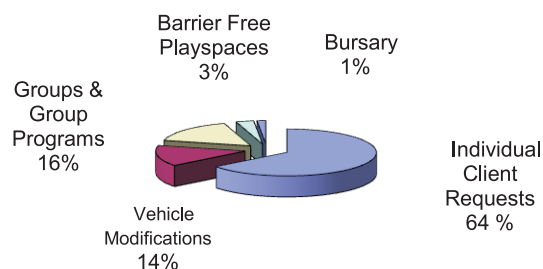
#### Endowment Fund

In 1987, the Board of Directors established the Endowment Fund to ensure that resources would be in place to meet the growing demand to provide the necessary funding for people with disabilities. Our goal is to reach \$10,000,000

#### Bursary Fund

The Bursary Fund was established in 1998 to ensure a source of funds for the Children's Ability Fund Bursary awarded annually to a student(s) with a disability entering the first year of a post secondary program

#### Client Care Donations



## Children's Ability Fund - Financial Synopsis

Audited Financial Statements have been prepared by independent external auditors Kingston Ross Pasmak and are available for review

# Vienna's Story

## Out in the Community

Thinking back to a time where we all walked to work or to shop at the local community grocer brings a feeling of nostalgia. In many small communities, and in small pockets in our large cities, this sense of community still occurs. Many young families are, by choice, deciding to spend their weekends enjoying their local community events – festivals, shopping, etc. Living close to an active centre lets us all enjoy the benefit of strolling at a leisurely pace window shopping or even just walking to the park with our children. Now imagine that your young child is too big to fit into your standard infant stroller, and is unable to walk the entire distance because of their disability. That quick trip to the grocery store to get milk or a prescription has to wait until your partner is around as you can't get there by yourself with the kids...

For Jennifer it had become a challenge to keep her family involved in the local community activities because of her daughter Vienna's disability. "My girls enjoy going out to the library, splash parks, playgrounds, and festivals. We enjoy being out in the community and community members seem to enjoy watching Vienna grow and develop and participate to the best of her abilities."

Vienna was born with Down syndrome and required open heart surgery at 6 months of age. She has very low muscle tone and has issues with aspiration and swallowing so she requires a stroller which can support a child of her size. The Children's Ability Fund provided funding for a specialized stroller which is large enough to hold Vienna and is structured to support her low tone and physical needs. "Without this specialized stroller Vienna and our family would not be able to participate in the community events that we enjoy. Having (it) has greatly improved our family and our daily routines."

This summer Vienna and her family were able to spend lots of time at the park, farmer's market, festivals, and enjoying our wonderful summer weather in their community. The smile on her face tells it all!

